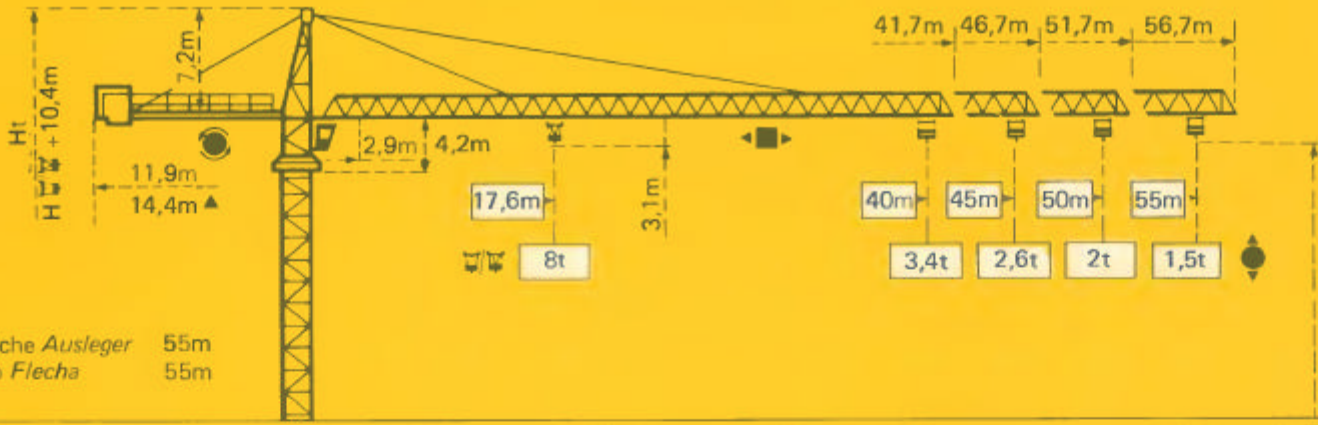




TOPKIT G20/15C

POTAIN 

Cotes Abmessungen Dimensions Dimensiones



▲ Flèche Ausleger 55m
▲ Jib Flecha 55m

Mâtère Mast Mast Mástil
□ 1,6m x 1,6m

Mâtère Mast Mast Mástil
□ 2m x 2m

PA459

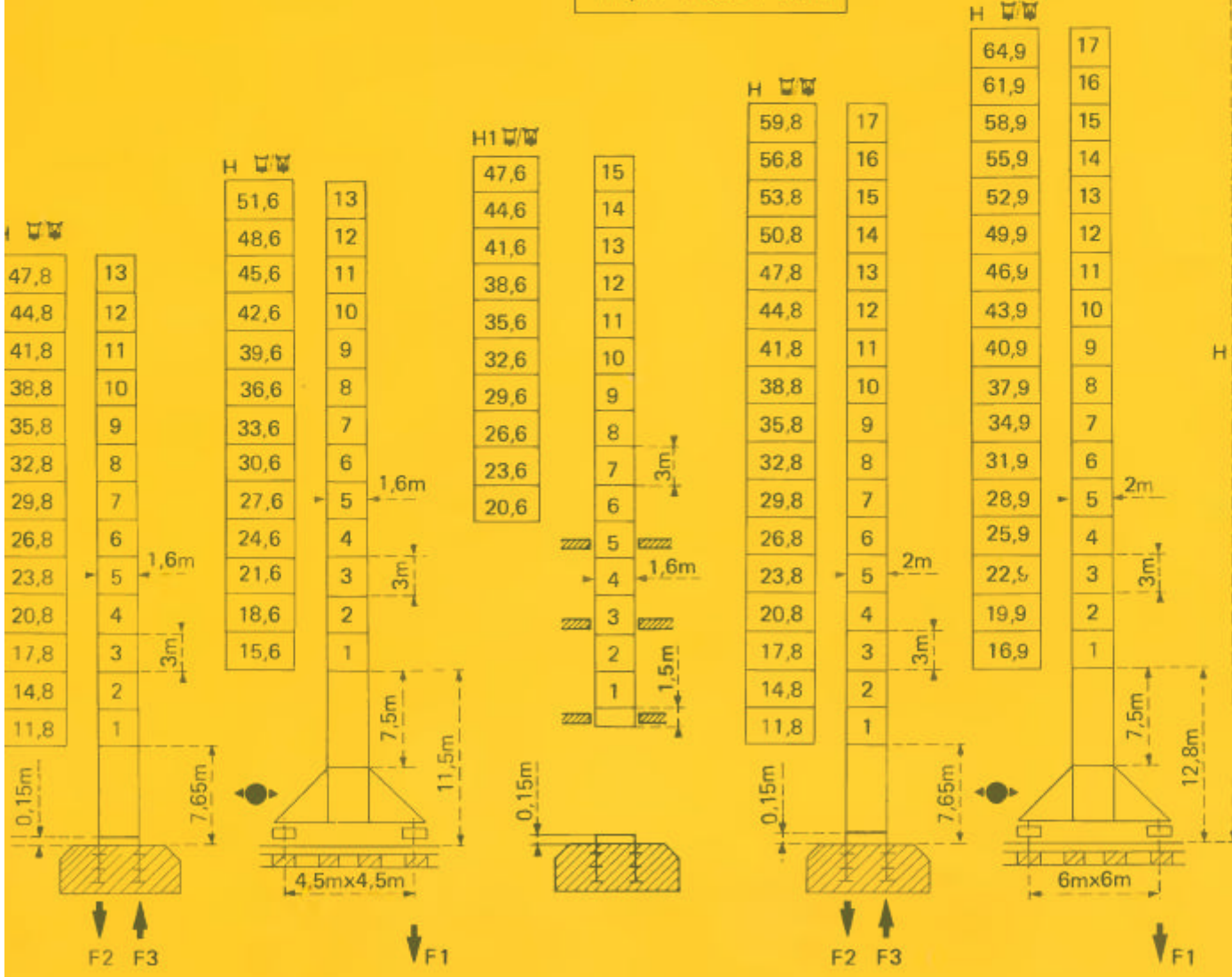
SB459

BA45A

PA663

VB 663

$$H_{\text{total}} = H_{\text{tower}} + 0,7\text{m}$$



F = Réactions Eckdrücke Reactions Reacciones

F2	● 102t	■ 130t
F3	● 70t	■ 103t
	● 39t	

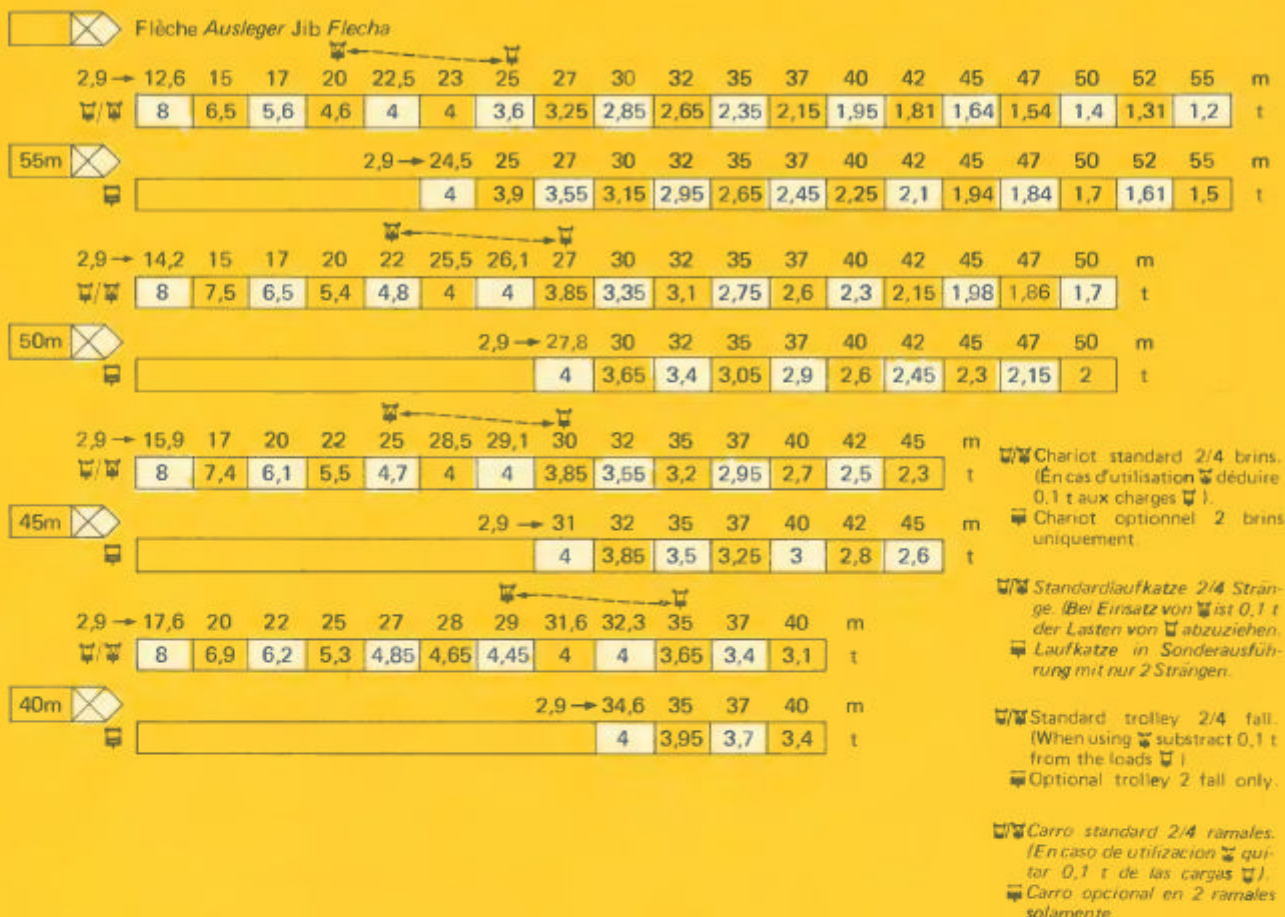
F1	● 76t	■ 94t
	● 47t	

Voir ci-contre
Siehe nebenstehend
See opposite
Ver página opuesta

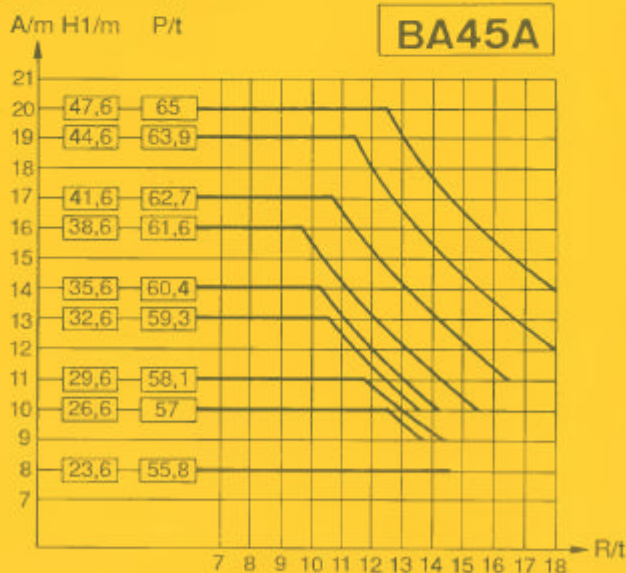
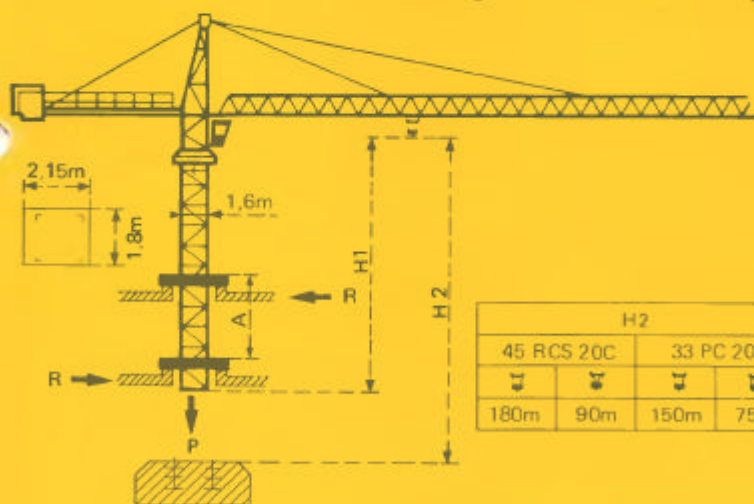
F2	● 108t	■ 165t
F3	● 44t	■ 132t
	● 49,5t	

F1	● 86t	■ 115t
	● 62,5t	

Courbes de charges Lastkurven Load diagrams Curvas de cargas


















Télescopage sur dalles - Ketterkrane im Gebäude Climbing crane - Telescopage gruas trepadoras



A Distance entre cadres	A Abstand zwischen den Rahmen	A Distance between collars	A Distancia entre marcos
H1 Hauteur grue	H1 Kranhöhe	H1 Crane height	H1 Altura grúa
P Poids de la grue (En service)	P Krangewicht (In Betrieb)	P Crane weight (In service)	P Peso de la grúa (En servicio)
R Réaction horizontale	R Horizontalkräfte	R Horizontal reaction	R Reacción horizontal

● En service	● In Betrieb	● In service	● En servicio
■ Hors service	■ Ausser Betrieb	■ Out of service	■ Fuera de servicio
⚡ A vide sans lest avec flèche et hauteur maximum.	⚡ Ohne Last und Ballast mit Maximalausleger und Maximalhöhe.	⚡ Without load and ballast with longest jib and maximum height.	⚡ Sin cargas, sin lastre con flecha y altura máxima.

				m/min	t		ch-PS hp	kW
Levage <i>Heben</i> Hoisting <i>Elevación</i>	45 RCS 20 C 	 	0 → 40	4	361 m > 361 m	45	33	
			0 → 80	2				
		 	0 → 20	8				
			0 → 40	4				
	33 PC 20 C 	 	5.4	4	299 m > 299 m	33	24	
			30	4				
			60	2				
		 	2.7	8				
			15	8				
			30	4				
	Distribution - <i>Katzfahren</i> Trolleying - <i>Distribución</i>		5 D3 V4	15 30 58			5	3,7
	Orientation - <i>Schwenken</i> Slewing - <i>Orientación</i>		OMD	0 → 0,7 tr/min U/min-rpm			8	5,9
Translation <i>Kranfahren</i> Travelling <i>Traslación</i>	SB 459  R ≥ 10m	RT 324	12,5-25			2 x 7	2 x 5,2	
		TCV 449 ARC H ≤ 33,6 m	10 - 50			4 x 6,8	4 x 5	
	VB 663  R ≥ 13m	RT 443 A1 2V	15 - 30			4 x 5	4 x 3,7	
		TCV 649 ARC H ≤ 43,9 m	10 - 50			4 x 6,8	4 x 5	
Réseau - <i>Netzstrom</i> - Mains supply - <i>Red</i>							380V - 50 HZ	
Puissance électrique nécessaire - <i>Anschlusswert</i> - Necessary electric power - <i>Potencia eléctrica necesaria</i>							RCS : 70 kVA PC : 50KVA	
Groupe électrogène - <i>Stromaggregat</i> - Generator set - <i>Grupo electrogeno</i>							.	

*Nous consulter - *Auf Anfrage* - Consult us - *Consultarnos*

Conforme à la directive CEE 84/534 sur le niveau acoustique - *In compliance with the EEC 84/534 Instruction on noise level*
 Gemäss EWG-Richtlinie 84/534 über Schall-Leistungspegel - *Conforme con la directiva CEE 84/534 sobre el nivel acustico*

NF E52081 - 82

POTAIN 

1, rue de Charbonnières, B.P. 173-F 69132 ECULLY Cedex
 Tél. 72.20.20.20 - Télex 330 179 - Télex. Export 375 213 -
 Fax 72 20 20 00

POTAIN GmbH 6082 MÖRFELDEN WALLDORF
 Erdendstr. 79-87 - Postfach 420
 Tel. 06 105 704.0 - Télex 4.1857 45

TOPKIT G20/15C

Réf. 1989.18 KZH 1